



Kempinski Residences The Creek

DUBAI

REFINED
WATERSIDE
LIVING



REAL ESTATE
STAY AHEAD, INVEST SMART



DUBRICKS
POSSIBILITIES ARE LIMITLESS



WELCOME TO KEMPINSKI RESIDENCES THE CREEK DUBAI

Situated in a spectacular location, moments away from The Creek in the heart of Dubai, these stunning residences represent the perfect balance of design and nature. This is the address of choice for the discerning who seek a balanced and serene lifestyle complemented by premium amenities and exquisite services.



Set in a City that Defies the Imagination

Dubai is a thriving and cosmopolitan metropolis that encapsulates a spirit of innovation and commitment to excellence. This 21st-century masterpiece has evolved into a remarkable city that embraces vibrant diversity and visionary ambition. It is a destination that places no limits on what can be accomplished.





A Captivating View

Nestled in natural surroundings and at the water's edge of The Creek, these avant-garde residences offer sweeping panoramic views that capture the heart and soul of Dubai. Marvel at the majestic Burj Khalifa, view life in motion at Creek Harbour or turn your eyes to the nearby Ras Al Khor Wildlife Sanctuary, a haven which reflects the peaceful serenity of Kempinski Residences The Creek Dubai.

A Distinguished Address

Average Travel Times:

Swiss International Scientific School	1 minute
Dubai Healthcare City (DHCC)	10 minutes
Downtown Dubai	10 minutes
Dubai Creek Harbour	10 minutes
Dubai Design District	10 minutes
Dubai International Airport	10 minutes
Wafi Mall	10 minutes
Deira	15 minutes
Dubai International Financial Centre (DIFC)	15 minutes
Dubai Creek Golf & Yacht Club	15 minutes
Kite Beach	20 minutes
La Mer Beach	20 minutes
Palm Jumeirah	25 minutes



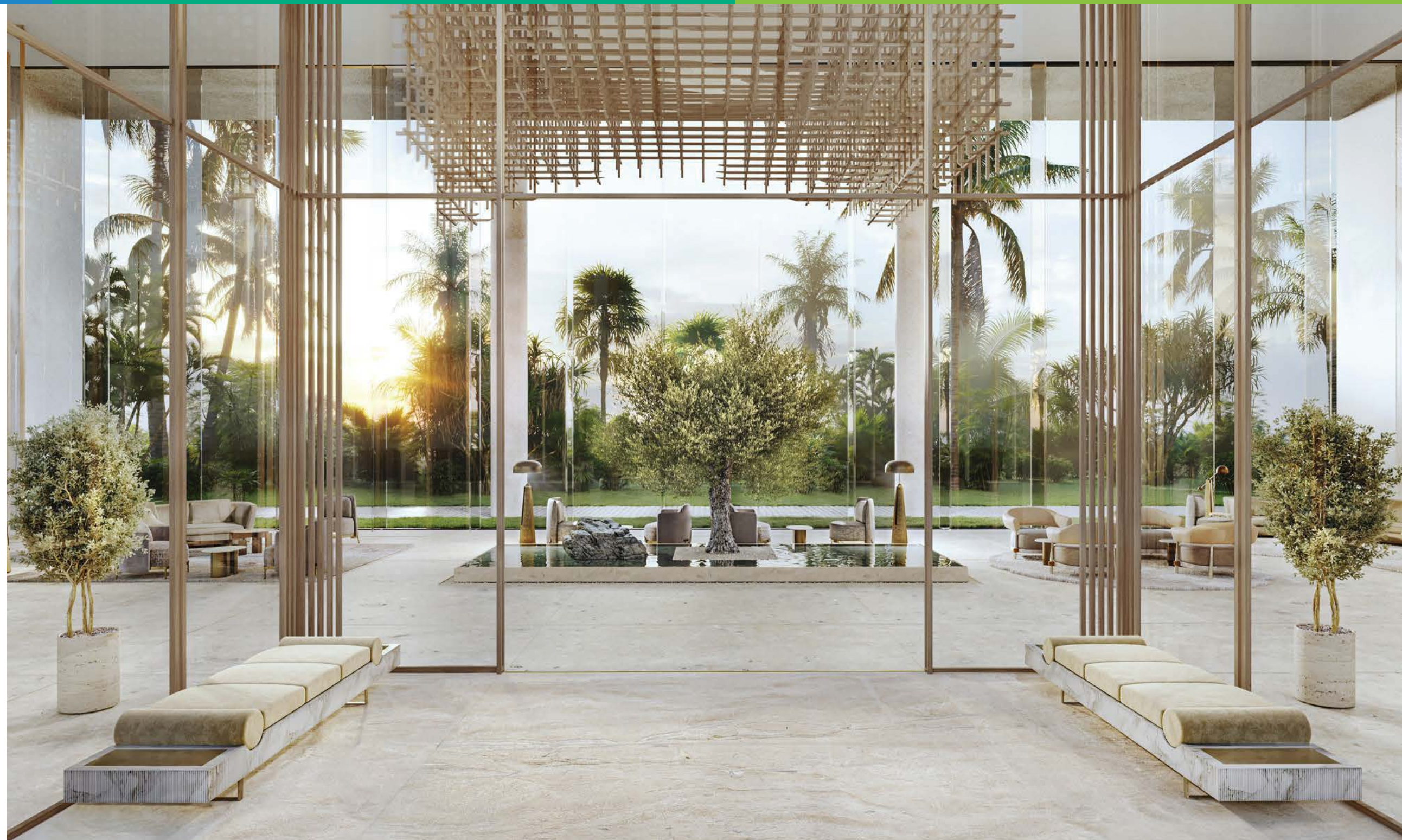


Embrace a Balanced Lifestyle

Conceptualised to integrate every element of superior living in the heart of a dazzling metropolis. Built to impress and enthrall, Kempinski Residences The Creek Dubai is carefully curated to create an environment that offers the balanced lifestyle of your choice. Each and every detail is meticulously considered with you and your family's well-being in mind.

Contemporary Blend of Design and Nature

Connected with nature, integrated into the natural flow of the landscape and at one with the surroundings. This is a community that is testimony to a harmonious lifestyle where the indoors and outdoors merge. Pure and minimalistic architecture and flowing terracing cascade down to lush landscaped areas that offer meandering waterside pathways and the freedom of space to enjoy outdoor living. The vast zen-like entrance lobby gently flows into the gardens. The natural colour palette and relaxing water features create an unparalleled sense of calm.

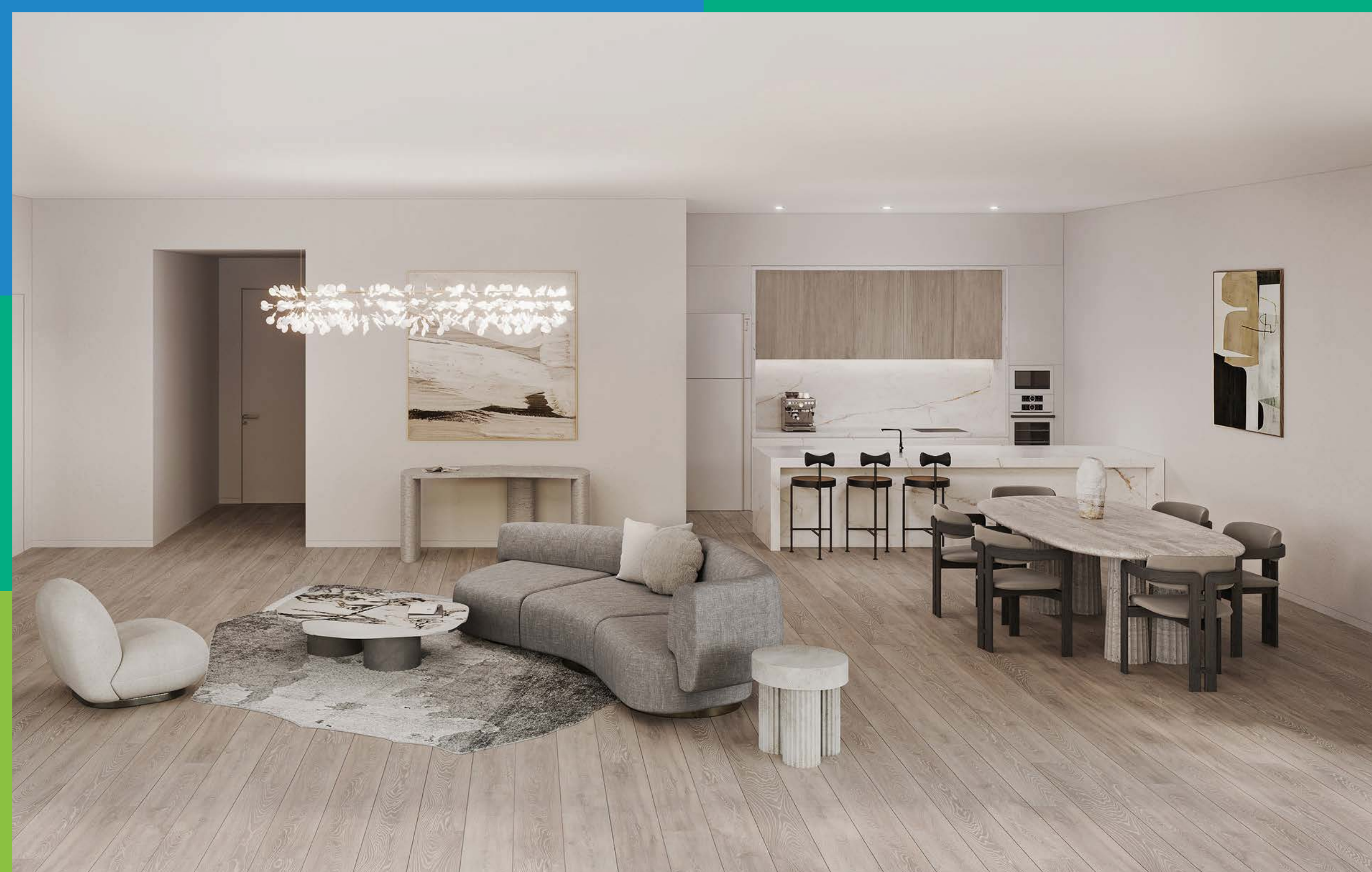




The Inimitable Living

Step into a harmonious living space that seamlessly flows and gently merges indoor and outdoor spaces. Vast floor-to-ceiling windows connect you to the beauty of the surrounding natural environment and welcome natural light into the stunning airy spaces. Gentle earthy tones, exquisite contemporary furnishings, and luxurious natural features such as wooden flooring and premium marble surfaces add to this uplifting and pure aesthetic.





Modern & Contemporary

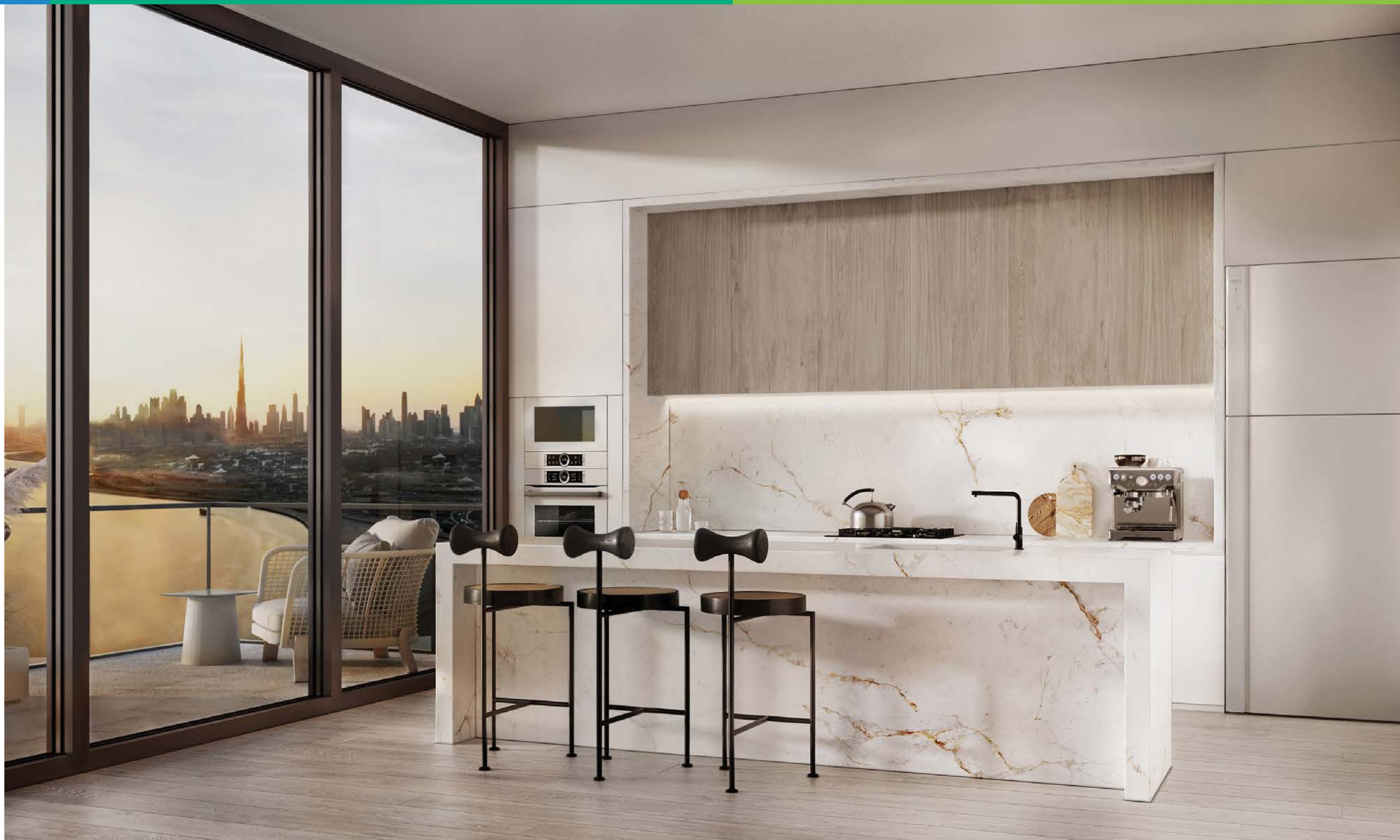
One-Bedroom Apartment

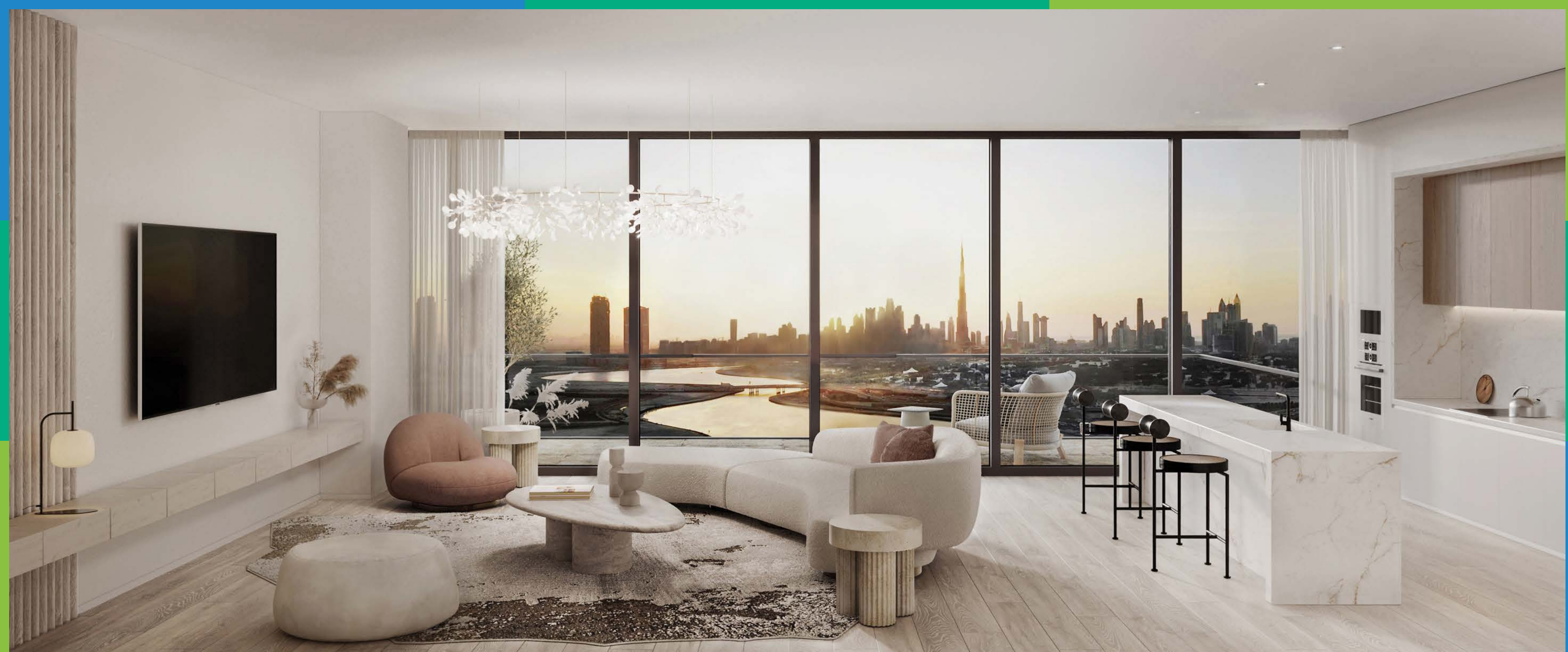
A stunningly designed space which is complemented by the natural colour palette and premium finishes. A selection of different dimensions, layouts and views offer the freedom to choose the space that reflects your lifestyle.

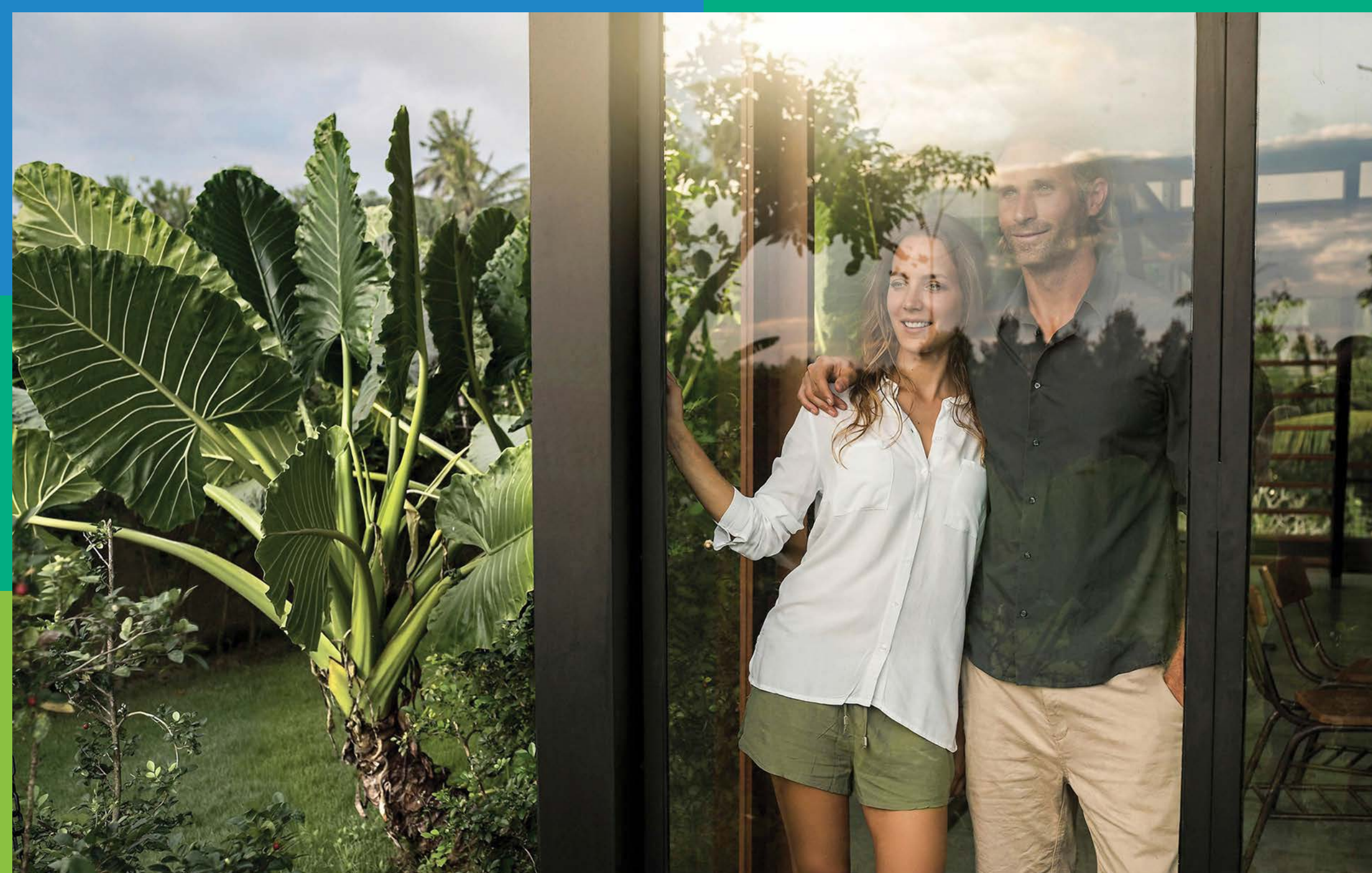
Calming & Inspired

Two-Bedroom Apartment

The two-bedroom apartment is superbly finished throughout and offers generous spaces that are impeccably designed. Neutral earthy tones create a welcoming and calming effect. Variations in size, layout and space offer a bespoke element.



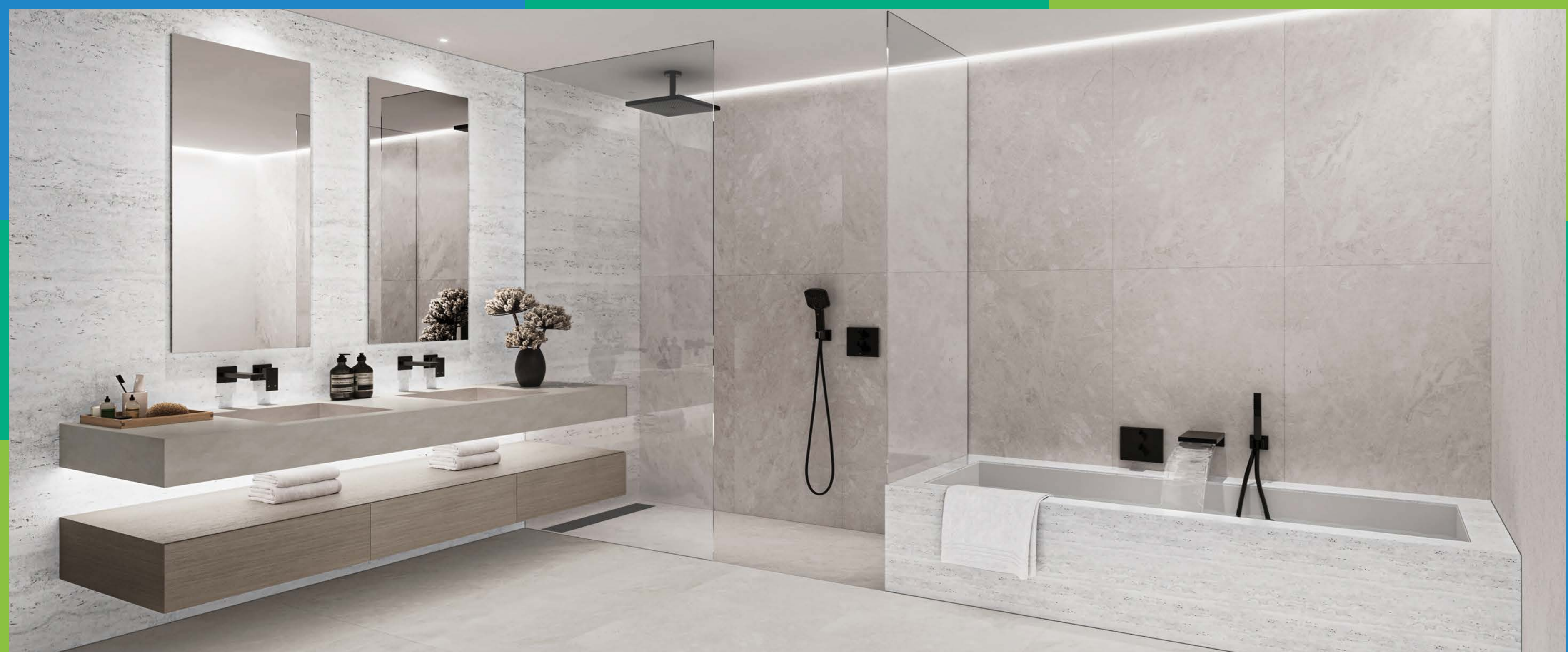




Inviting & Stylish

Three-Bedroom Apartment

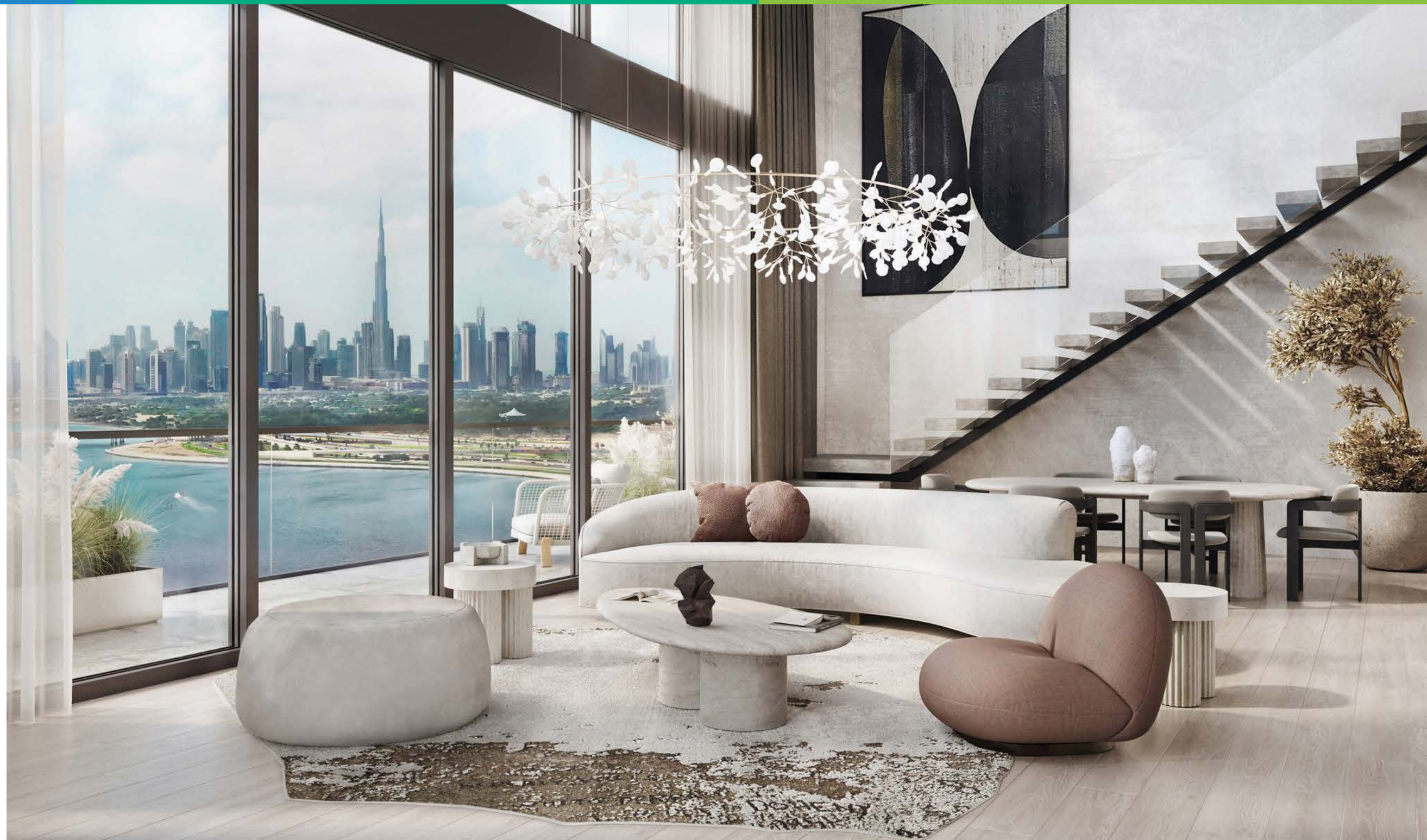
Soft natural colours and features add to the light-infused, airy feel of this three-bedroom apartment. Vast windows are juxtaposed with stylish modern furnishings and premium finishes. Choose from a selection of different sizes, flow and views to reflect your personal preferences.

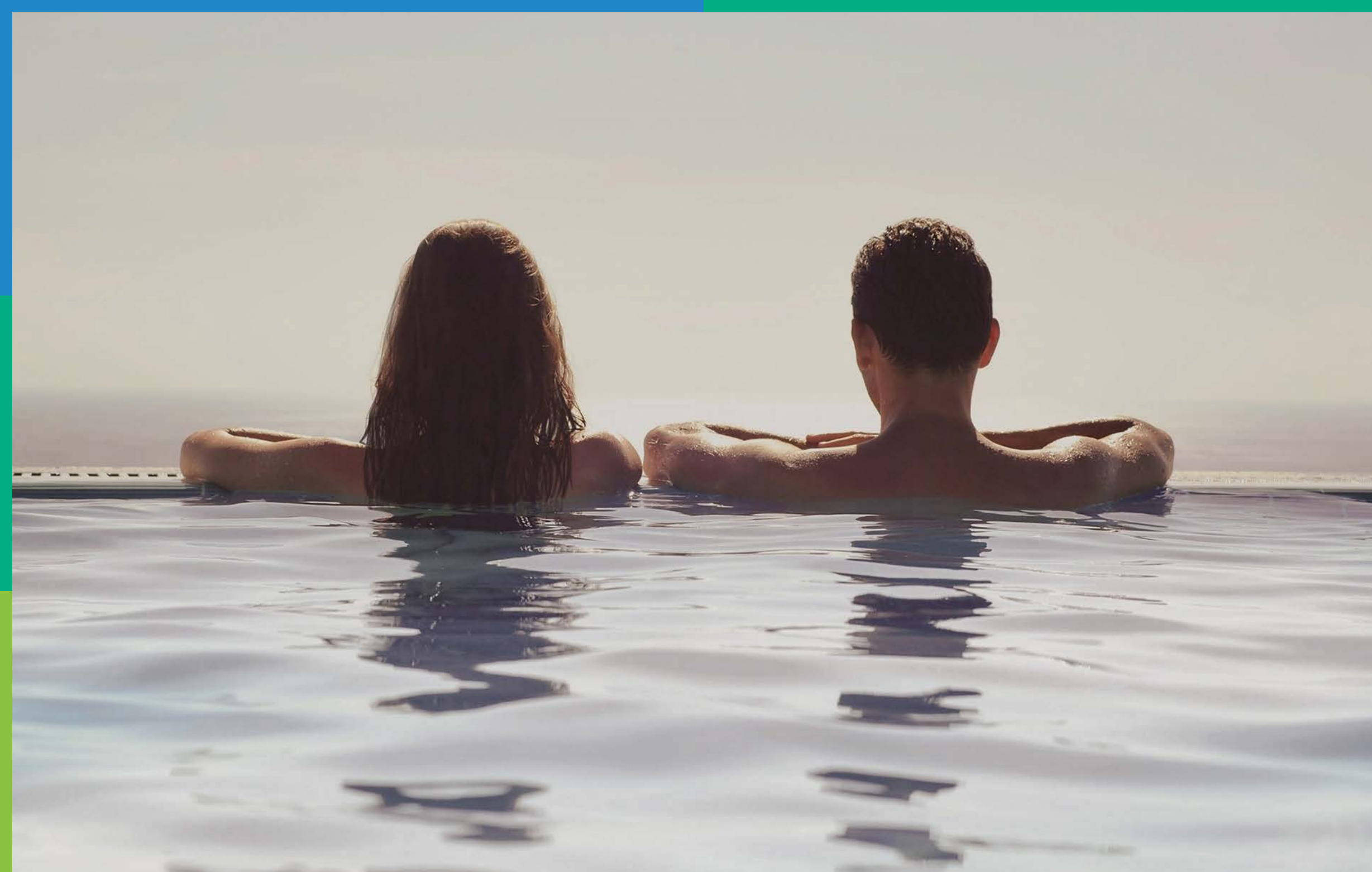


Exquisite & Natural

Two-Bedroom Duplex Apartment

This spacious two-bedroom duplex apartment celebrates the finest in modern aesthetics and is complemented by a gentle colour palette and spectacular views of the natural surroundings. A wonderful sense of space is created by double-height ceilings and large folding glass doors which lead onto the balcony. Create the perfect lifestyle balance with the spaces and layouts that suit you.





Balanced & Flowing

Three-Bedroom Duplex Apartment

The three-bedroom duplex apartment offers a natural flow between the living spaces on two levels. Impressive high ceilings and folding glass doors lead to a balcony or a terrace with a plunge pool and create a spectacular sense of space and freedom. This duplex apartment is stunningly finished throughout in a contemporary design.

Spectacular & Spacious

Four-Bedroom Duplex Apartment

Featuring sweeping panoramic views beyond compare, this duplex apartment space demonstrates how a modern architecture, a connection between indoor and outdoor as well as the use of natural tones can create inspiring homes that contribute to a fulfilling sense of well-being. Key features include uplifting double-height ceilings, expansive windows with folding doors and a splendid terrace area with a private plunge pool.







Exclusive Benefits

Kempinski Residences The Creek Dubai offers an impressive collection of bespoke à la carte services that complement your refined waterside living.

Owners Benefits

- 10% Savings on Food and Beverages
- 10% Savings on Spa Treatments
- Kempinski Discovery Membership

Amenities & Facilities

- | | |
|--|-----------------------------------|
| - Concierge Service 24/7 | - Modern Gym |
| - Valet Parking 24/7 | - Yoga Studio |
| - Security 24/7 | - Squash Court |
| - Wake-up Service | - Padel Tennis |
| - Car Rental Reservations | - Beach Volleyball |
| - Restaurant/Theatre Reservations | - Basketball Court |
| - Common Area Maintenance & Housekeeping | - Games Room |
| - Gardening & Landscaping | - Kids Club |
| - Garbage Disposal | - Kids Outdoor Park & Splash Pool |
| - Outdoor Swimming Pool | - Business Centre |
| - Wellness Centre | - Cinema Room |

À la Carte Offerings

- | | |
|---------------------------------------|---|
| - Butler Service | - Maid Service |
| - Limousine Service/Airport Transfers | - Towel, Linen & Guest Amenities |
| - Travel Agency Services | - Laundry, Dry Cleaning, Ironing |
| - Luggage Handling & Storage | - Plant Care |
| - Newspaper Delivery | - Breakfast & All-Day Dining Restaurant |
| - Shopping Assistance | - Party Service (Rent-a-Chef/Waiter) |
| - Fresh Flower Service | - Grocery Service |
| - Auto Care | - Spa Treatment |
| - Nanny/Babysitting | - Personal Trainer |
| - Pet Care Service | - Meeting Room Rental |
| - Apartment Maintenance Packages | - Notary Public Service |



The World of Kempinski

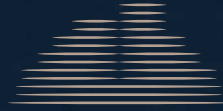
Since 1897, Kempinski has explored the world to create a constellation of remarkable havens, from European cities to the wide-open wilderness of the Masai Mara; from former palaces to stunning modern architectural masterpieces. Inspired by its heritage, each Kempinski hotel and residence creates an exceptional sense of place, delivering beautiful performances to ensure its guests and residents stay in style and comfort. Driven by an unerring quest for excellence, only the most precious pearls are added to its exclusive collection. Encapsulating this commitment, Kempinski Residences The Creek Dubai is its latest and most exquisite addition.





The Beauty of Life Redefined

Swiss Property strives for nothing short of excellence. The company operates within a core culture of craftsmanship and innovation to deliver the highest standard of service. Each development, built with an eye to the future, is an investment of lasting value. Swiss Property incorporates environmentally friendly features and amenities as much as possible to ensure a healthier lifestyle for all its residents. Just as important, is the fact that each property is unique, like the people who live in it.



Kempinski Residences The Creek

DUBAI

FOR MORE INFORMATION PLEASE CONTACT



REAL ESTATE

STAY AHEAD, INVEST SMART

☎ +971 55 476 7630
☎ +971 4 368 7878
✉ info@afsrealestate.com
🌐 www.afsrealestate.com



DUBRICKS

POSSIBILITIES ARE LIMITLESS

☎ +971 50 674 2020
☎ +971 4 368 7878
✉ info@dubricks.com
🌐 www.dubricks.com

Kempinski

HOTELIERS SINCE 1897